

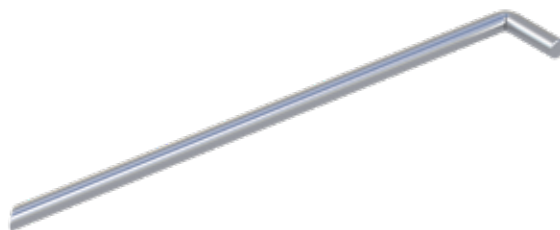
Mobile Fencing & Security

Soilpin for brace

Specifications

Dimensions Height (mm)	600
Dimensions Width (mm)	85
Dimensions Depth (mm)	20
Package quantity	10
Weight (Kg)	1.54

Disclaimer: There are no rights to be derived from the technical specification. You should always consider up to 10% tolerance deviations. Heras herewith complies with NEN-EN 10305-3 © Heras.



Anchoring the Heras fence stabiliser in the ground.

For anchoring the brace in the ground.

In an ever-changing climate with increased weather extremes, Heras fence stabilisers provide extra stability. A simple Heras fence stabiliser construction limits the chance of the Heras fencing being blown or knocked over. Heras fence stabilisers are fixed into the ground with a soil pin. This solid galvanised pin is 600 mm long and over 15 mm thick.

- Simple anchoring
- Effective

Prevent Heras temporary fencing being blown over.

"Open" temporary fencing usually require a Heras fence stabiliser element to be fitted to 1 in 3 fences. temporary fencing sometimes has banners and/or tarpaulins attached for various reasons. This may be, for example, to shield the construction site from prying eyes, to prevent noise pollution, or for promotional purposes. However, a banner or tarpaulin will catch more wind, effectively turning the fence line into a large kite. The surroundings may therefore not always suit additional elements to be placed on the fence; if they are required, reinforcement such as a Heras fence stabiliser construction must be fitted. In this case, every fence element must be equipped with a Heras fence stabiliser and soil pin. Ask our employees for advice about your particular situation.