

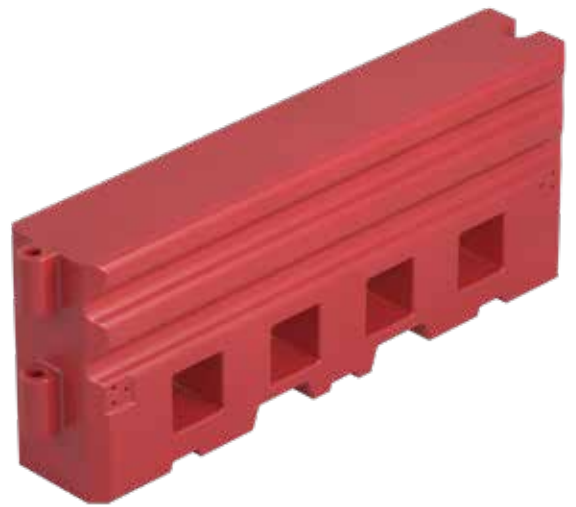
# Mobile Fencing & Security

## RB22 Barrier Red

### Specifications

Dimensions Height (mm)	800
Dimensions Width (mm)	500
Dimensions Depth (mm)	2000
Package quantity	
Weight (Kg)	60.00
Weight full	

Disclaimer: There are no rights to be derived from the technical specification. You should always consider up to 10% tolerance deviations. Heras herewith complies with NEN-EN 10305-3 © Heras.



## The quickest deployable barrier system

### Safely boarding off temporary roadworks and highway maintenance areas

Our RB22 Crash Barriers are ideally suited for deployment in unsafe traffic locations such as extreme sharp or blind curves, mountainous roads, high embankments or bordering off roadworks. Should the road user still collide with the barriers in the event of an accident the crash barrier will be absorbing impact energy of the hitting vehicle and reduces the severity of the accident. The water filled RB22 crash barrier can withstand an impact from vehicles travelling at up to 50 mph. So it will bring an errant vehicle to a controlled stop.

- Easily deployed and handled
- Water filled during assembly
- Full system available

### Strong and flexible traffic barrier

The robust and highly capable RB22 barrier is a versatile, yet strong and flexible one-piece water fillable system. The barrier is manufactured from prime UV stabilised polyethylene. And there for easily deployed and handled by your workforce without heavy lifting machinery. The units are quickly assembled and secured by the pin hinge system and support plates. The barriers can be water filled during assembly. The RB22 Crash Barriers can be delivered in two colors, red and white. And are fully compatible with our mesh and hoarding panel systems.